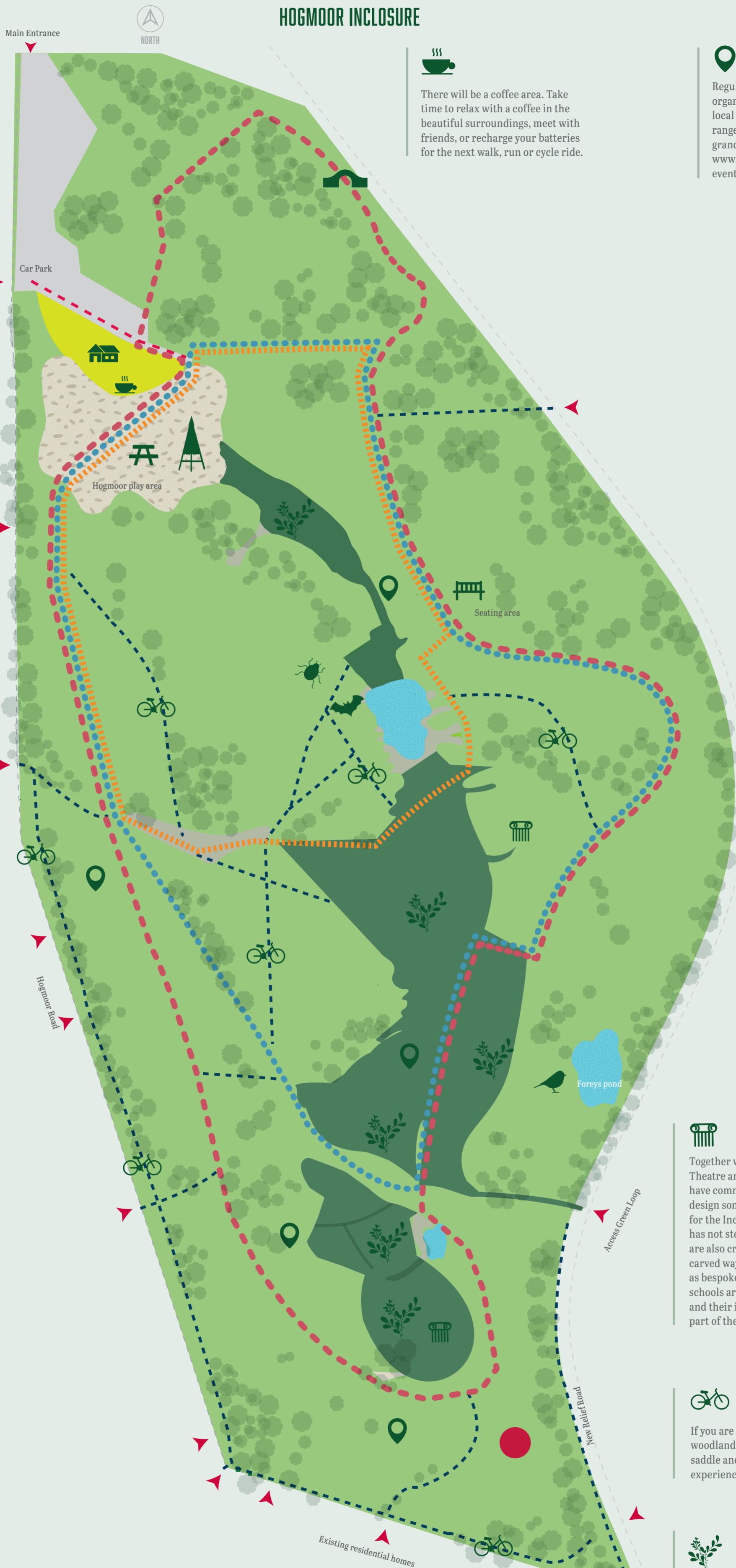


HOGMOOR INCLOSURE



COMMUNITY FACILITIES (EXPECTED WINTER 2018)

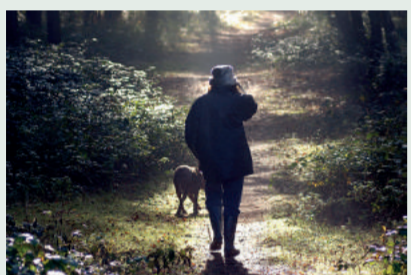
Hogmoor Inclosure is all about bringing the community together, providing a safe, welcoming, educational environment that everyone – young and old – can enjoy. There will be a café/Multi purpose room and WC facilities.



HOGMOOR PLAY & ACTIVITY FACILITIES

The natural play area has been designed for children of all ages and abilities to enjoy. There is a zip wire and high slide for the braver adventurers as well as smaller play areas for the younger children to enjoy.

- Activities include:
- Wobble disk
 - Castle
 - Sandpit
 - Queens swing
 - Maze
 - Zip wire



LEGION TRAIL 2.9KM

The longest of the three trails, the Legion Trail reminds us of the area's Roman history. You will see Roman influence highlighted and hand carved trail markers en route.



REME TRAIL 2.1KM

Celebrating the work of the famous Corps of Royal Electrical and Mechanical Engineers – REME for short. Follow the carved trail markers which reflect on the REME experience during the First World War.



GILBERT WHITE TRAIL 1.2KM

Named after the famous local 18th century author and naturalist, the Gilbert White trail is perfect for a brisk short walk. Note the changes in the flora and fauna which would have been seen and noted by Gilbert himself back in the day.



Hogmoor Inclosure in relation to the rest of Prince Philip Park.

KEY	
LEGION TRAIL	Red dashed line
REME TRAIL	Blue dotted line
GILBERT WHITE TRAIL	Orange dashed line
OTHER ROUTES	Black dashed line
PEDESTRIAN ENTRANCES	Red triangle
NATURAL PLAY AREA	Tree icon
SANG COMMUNITY FACILITY	House icon
BRIDGE	Bridge icon
COFFEE AREA	Coffee cup icon
ACTIVITIES	Location pin icon
BIRD HIDE	Bird icon
CYCLING	Bicycle icon
HEATHLAND AREA	Grass icon
ART INSTALLATION	Sculpture icon
BUG HOTEL	Bug icon
BAT BUNKER	Bat icon
PICNIC AREA	Picnic table icon

SCALE 1:2000

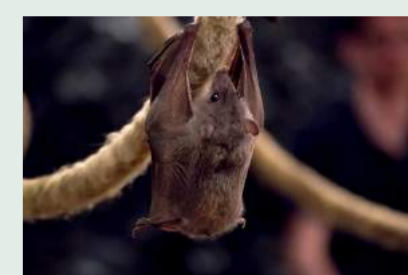


Regular events and activities will be organised throughout the year involving local residents. These will appeal to a wide range of people from children through to grandparents. To get involved visit www.princephilippark.co.uk/events/event-calendar/ to see what is going on!



BUG HOTEL

With our Bug Hotels, we are keeping our smallest residents in the best of health. Giving them somewhere to shelter, grow and thrive.



BAT BUNKER

At the heart of our efforts to protect the bats habitat, lies a new bat bunker. An important facility for our protected bat population.



BIRD HIDE

The Inclosure is already a haven for a variety of species of birds, and we have made it perfect for people who like to watch them too. The bespoke Bird Hide is adjacent to the pond.



Together with The Phoenix Theatre and Arts Centre, we have commissioned an artist to design some stunning gateways for the Inclosure. Their work has not stopped there – they are also creating 20 hand carved waymarkers as well as bespoke art pieces. Local schools are being consulted and their ideas are forming part of the design.



If you are a cyclist, you are in for a real treat. Peaceful woodland routes abound – ideal for quality time in the saddle and a perfect opportunity for little ones to gain experience and confidence using the off-road tracks.



A new heathland area is evolving to make sure the diversity of the area is protected for wildlife and visitors alike.



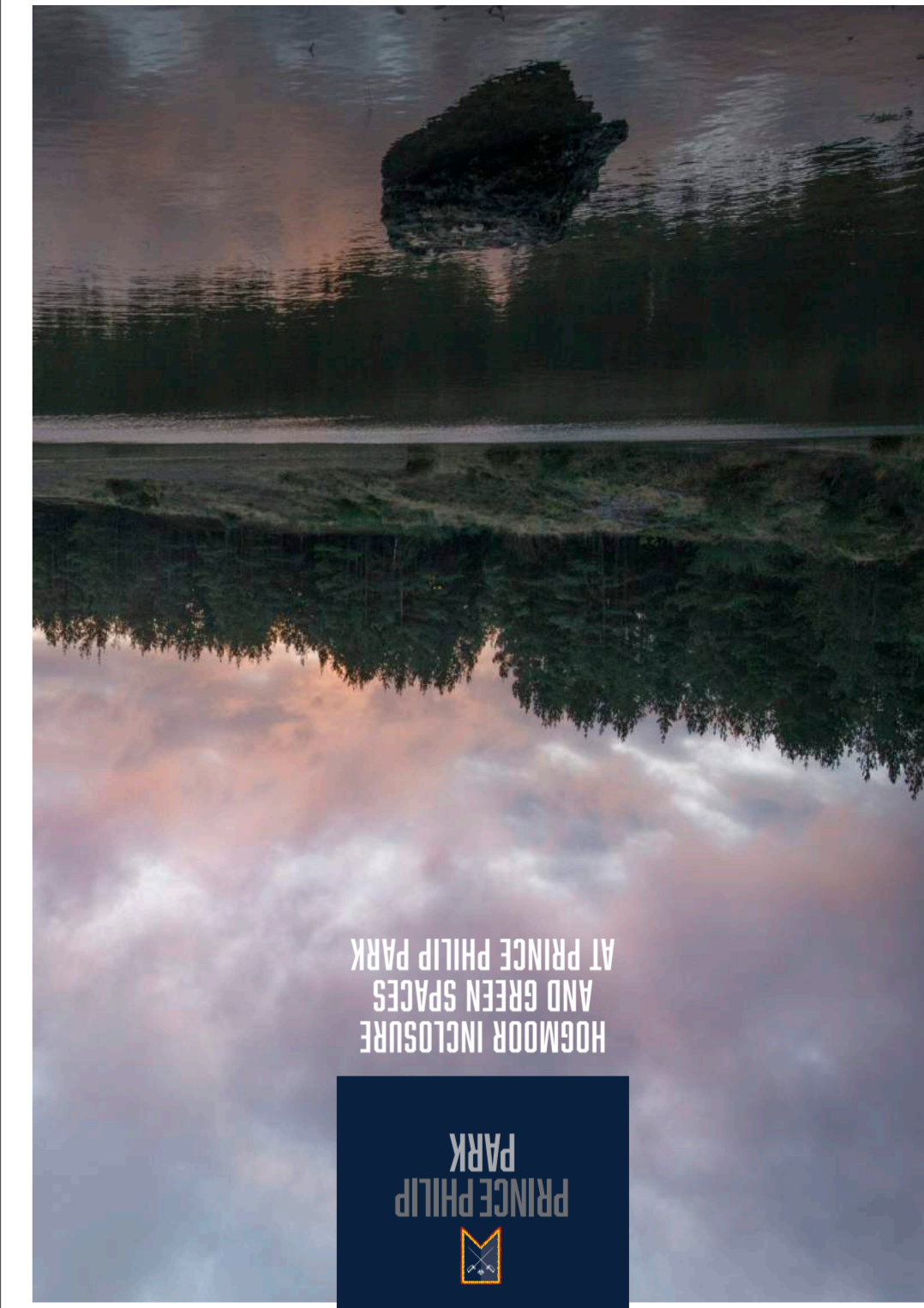
The area covers a wide range of walks, where you can take quiet strolls and discover the beauty of the spectacular nature around you, or enjoy an energetic run. The area is also perfect for walking your four-legged friend, and a place where dog walking groups can meet regularly.

Welcome to Hogmoor Inclosure & Green Spaces. A total of 100 hectares of green space set in the heart of Prince Philip Park, 54 of which are contained in the Hogmoor Inclosure.



Enhancing the reptile habitat through restoration of seven hectares of heathland.

Informal open and natural green spaces will be created. Play areas for children of all ages will be scattered through the scheme, so young people are never far from a place to play outdoors.



HOGMOOR INCLOSURE AND GREEN SPACES AT PRINCE PHILIP PARK



Approximately 750,000 shrubs and trees will be planted over the course of the development.



HOGMOOR INCLOSURE

Hogmoor Inclosure is the third largest, suitable alternative nature space (SANG) of its kind in the UK. It is a space where you get up close and personal with nature, where you can explore habitats and natural features of all shapes and sizes.

Activities include...

- Space to breathe
- Dog walking
- Exercising
- Education
- Café
- Picnic area



The provision of a bat bunker and extra nest boxes support local wildlife.

Working in partnership with Deadwater Valley Trust, we have set a programme of activity into action, influenced by the history of the area and all working hand-in-hand with the community to make this semi-natural environment even more fantastic for all.



Bird hide with pond: a place for wildlife and animals. To be shared with local schools and enjoyed by all.



Accessible to all, space for everyone.



The 'Green Loop' promotes safe and attractive routes through the town for walkers and cyclists to use away from the main roads.



OXNEY STREAM

The Oxney Stream is a semi-natural stream that has been naturalised to make it cleaner than ever. Meanders, pools and riffles will be created, so we offer plenty of inviting spots for wildlife and visitors alike.

There will be a network of pedestrian and cycle paths that mirror the length of the stream and connect to the communities next door.

Aside from Hogmoor Inclosure, there are many other green spaces in Prince Philip Park. Linear Park, around 4.5 hectares in size, will form the spine of the development. The 'Green Loop' is a 7 mile circular pedestrian and cycle route connecting the new and existing community of Whitehill & Bordon.



LINEAR PARK (EXPECTED 2023)

The Linear Park will be a large green space open to all, perfect for walking the dog, kicking a ball around or even getting into shape on the outdoor gym equipment. Not only that, it will also mean safe, attractive routes through the new community for work, school and play.

Attractions will include:

- Ball games
- Outdoor shows
- Walking
- Picnic
- Coloured flower carpet
- Play area



Three natural ponds have been created in Hogmoor Inclosure for all visitors to enjoy.



SKATE PARK

Whether you are into two or four wheels, you will enjoy the new skate park. Designed by the local community and situated on the corner of Budds lane and Station Road, plans for the skate park were drawn up following consultation with skaters across the town to make sure we got it right.

It is great fun for skaters of all abilities, with everything from grind ledges to a 6ft high mini-ramp.



Sensitively planned landscaping to include features like coloured flower carpets.



TOWN PARK (EXPECTED 2020)

A small urban park is being built in the Town Centre that will wrap around the Makers Market. This area will be for people to sit back, relax and meet with friends. A terrace will overlook the park from the former Sergeant's Mess.

- Play area
- Events and pop-ups
- Picnic
- Petanque
- Yoga and meditation
- Socials
- Wifi
- Coffee



Open 24/7, free to use and a great way of socialising and learning new skills.

W&B
WHITEHILL & BORDON
REGENERATION COMPANY

In partnership with



Friends of Hogmoor Inclosure is a group of people in the community that organise events and care about Hogmoor Inclosure. Join the 'Friends of Hogmoor' volunteer group if you are passionate about Hogmoor Inclosure and are interested in helping to look after the area and allow it to prosper for future generations.

Deadwater Valley Trust is a local environmental charity in Whitehill & Bordon which has successfully provided nearly thirty years of management of the Deadwater Valley Local Nature Reserve, and more recently, Bordon Inclosure.

www.deadwatervalleytrust.co.uk

WWW.PRINCEPHILIPARK.CO.UK
01420 489 060